

## HR50 FR Coverall

Available in Red, Orange or Navy

350gsm FR AS Fabric  
99% Cotton / 1% Carbon Fibre

Sizes:  
SMALL - 5XL

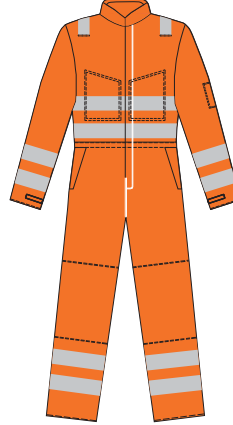
### Standards

- EN ISO 11612 (A1+A2, B1, C1, E2, F1)
- EN ISO 11611 Class 2 (A1+A2)
- EN 1149-5
- IEC 61482-2, IEC 61482-1-1 (ELIM 18 CAL/CM<sup>2</sup>)
- IEC 61482-2, IEC 61482-1-2 APC 1
- ASTM F1959/F1959M-12 ATPV=20 CAL/CM<sup>2</sup>
- EN20471 Class-2
- EN13034 Type 6

HR50 RED



HR50 ORANGE



HR50 NAVY



### Multi-Hazard Workwear

The HR50 is manufactured from 99% Cotton and 1% Carbon Fibre.

It is expertly developed to provide flame, welding, electric arc and anti-static protection while offering guaranteed wearer comfort.

This advanced technology fabric is designed for a range of industries offering maximum comfort and outstanding protection.

The stain resistant fluorocarbon finish helps liquids to bead and roll off.

### Flame Resistant

This cutting-edge line of flame-resistant products offers comprehensive protection in hazardous settings.

The culmination of extensive experience, advanced technology and thorough market research, has created a state-of-the-art product range showcasing our commitment to ensuring the health, safety, and comfort of the wearer.

Our dedication is evident in the diverse product range tailored for various climates and applications.

### Features

- Protection against radiant, convective and contact heat
- Triple-stitched seams for extra durability
- Side access pockets
- Action back for extra freedom of movement
- Concealed chest pockets
- High visibility 50mm strips on shoulders, arms, waist and legs
- Concealed YKK two way brass zipper to front
- Covered rule pocket
- Two inch drop down hem

Colours shown are for representation only.

## HR50 FR Coverall

High collar stud fasten

Two communication loops

Two covered chest pockets c/w  
YKK zip

Elasticated waist

Two waist pockets

Covered rule pocket

Two inch drop down hem

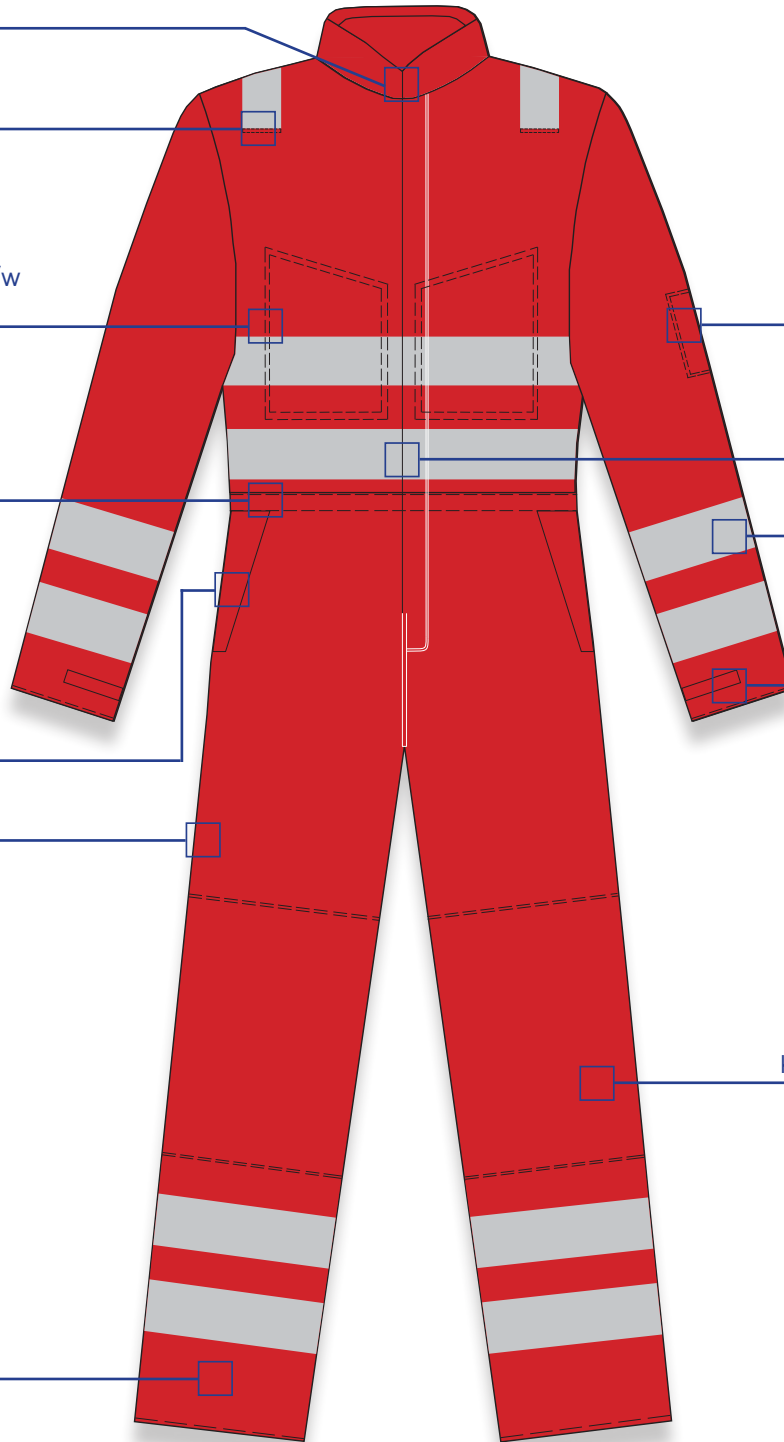
Covered arm pocket

Two way full length YKK zip

50mm wide reflectives

Wrist closures

Kneepad holders, bottom loading



- All main seams triple stitched
- All Hi Vis tape double stitched
- Bar tack reinforcement on key zones
- Expanding back



Colours shown are for representation only.